



An Roinn Sláinte
Department of Health

National Clinical Guidelines- their contribution to the clinical effectiveness movement in Ireland

Prof. Karen Ryan

Chair, National Clinical Effectiveness Committee

19th November 2019





PATIENT SAFETY SURVEILLANCE UNIT

Data, Health Information, Trends, Patient Experience, Outcomes, Quality



CLINICAL EFFECTIVENESS UNIT

National Clinical Guidelines, National Clinical Audit, Clinical Practice Guidance, Capacity Building, Implementation Framework



PATIENT SAFETY, ADVOCACY & POLICY UNIT

Patient Safety Advocacy and Complaints Policy, Patient Safety Legislation



Clinical Effectiveness



The extent to which specific clinical interventions do what they are intended to do. A collection of activities and tools, based on research and measurement that are used to improve the quality of healthcare.



The **Right** care

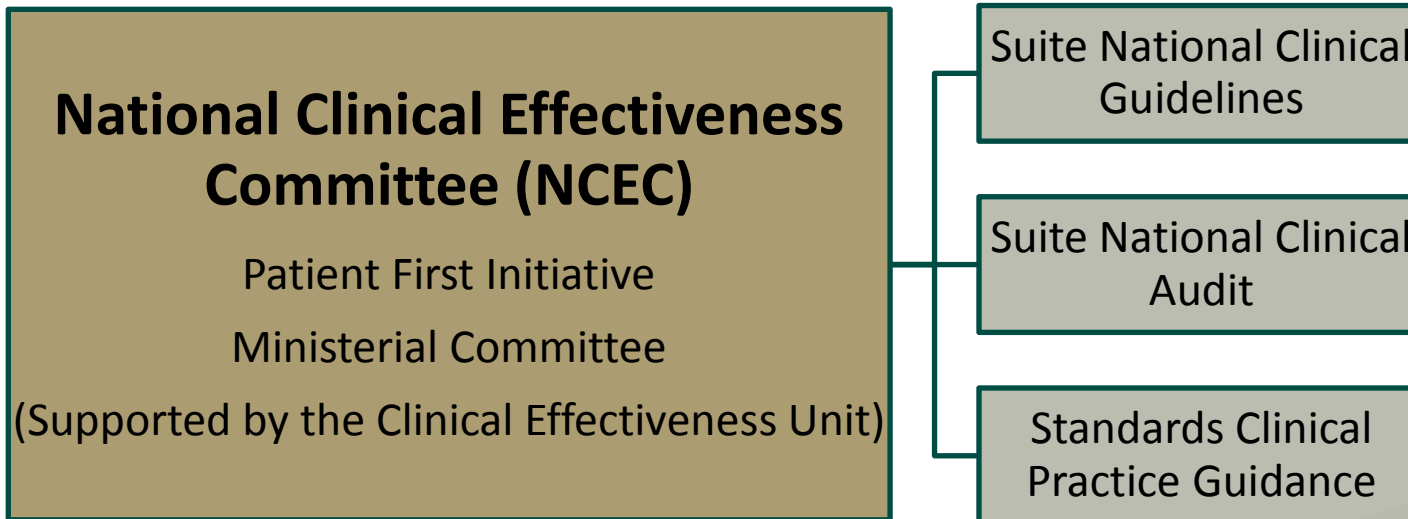
In the **Right** place

At the **Right** time

With the **Right** information

Within available resources

Framework for Clinical Effectiveness



Irish Maternity Early Warning System
(IMEWS) V2
National Clinical Guideline No. 4

February 2019



NATIONAL
CLINICAL
EFFECTIVENESS
COMMITTEE



Major Trauma Audit
NCEC National Clinical Audit No.1



NATIONAL
CLINICAL
EFFECTIVENESS
COMMITTEE

To identify
Subsidiary
Patient Safety
Issues

National Clinical Effectiveness Committee
Standards for Clinical Practice Guidance



Terms of reference for the NCEC



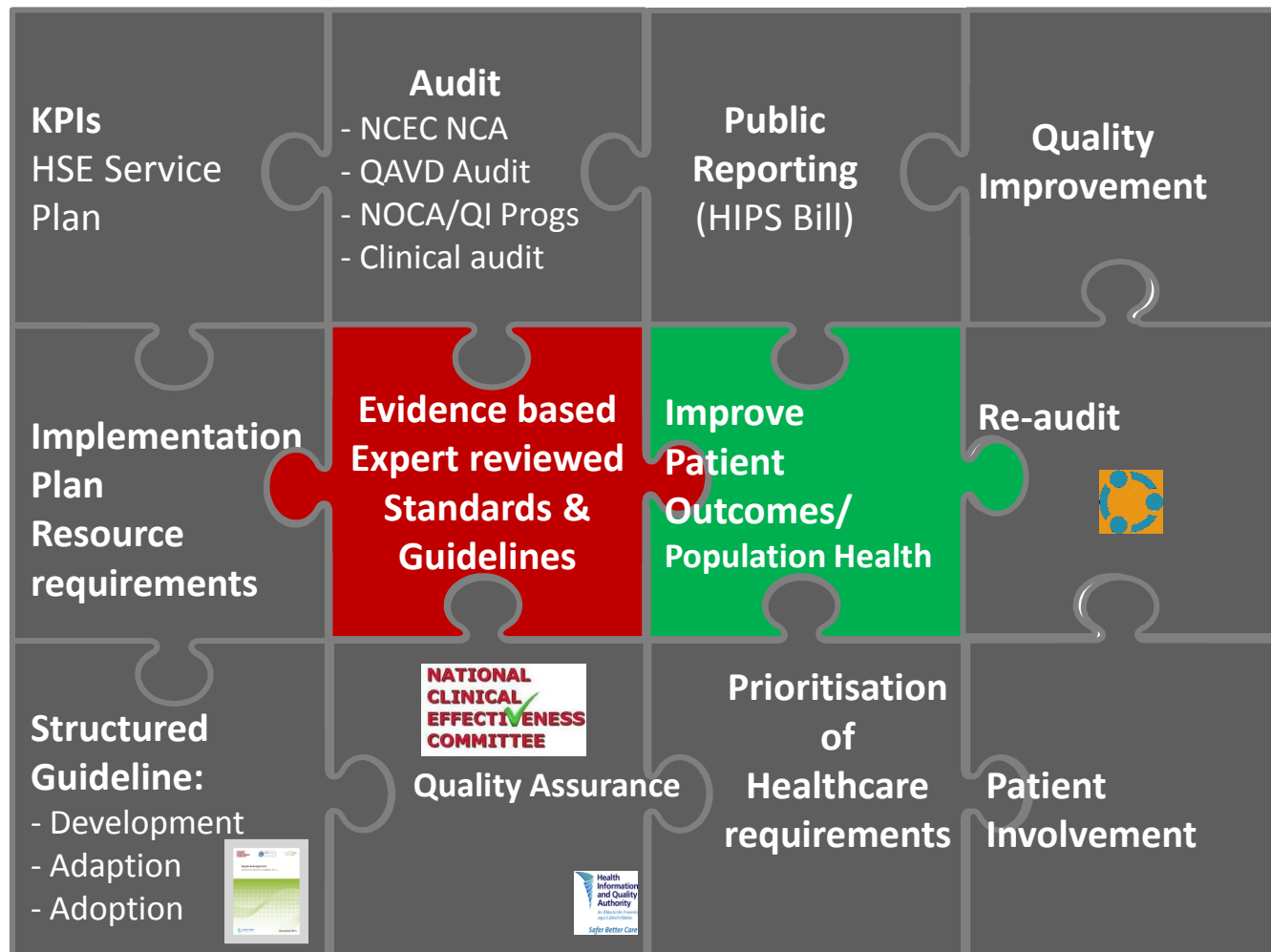
NCEC Terms of Reference

- Provide strategic leadership for the national clinical effectiveness agenda.
- Contribute to national patient safety and quality improvement agendas.
- Publish standards for clinical practice guidance.
- Publish guidance for National Clinical Guidelines and National Clinical Audit.
- Prioritise and quality-assure National Clinical Guidelines and National Clinical Audit.
- Commission National Clinical Guidelines and National Clinical Audit.
- Align National Clinical Guidelines and National Clinical Audit with implementation levers.
- Report periodically on the implementation and impact of National Clinical Guidelines and the performance of National Clinical Audit.
- Establish sub-committees for NCEC work-streams.
- Publish an Annual Report.

Clinical Effectiveness



National Clinical Effectiveness Agenda



Implementation on Levers

- Ministerial endorsement
- Implementation mandate
- Indemnity
- Regulators
- Insurers
- ABF
- Patients
- Culture
- HSE Service Plan & accountability frameworks

NATIONAL CLINICAL EFFECTIVENESS COMMITTEE

NCEC National Clinical Guidelines

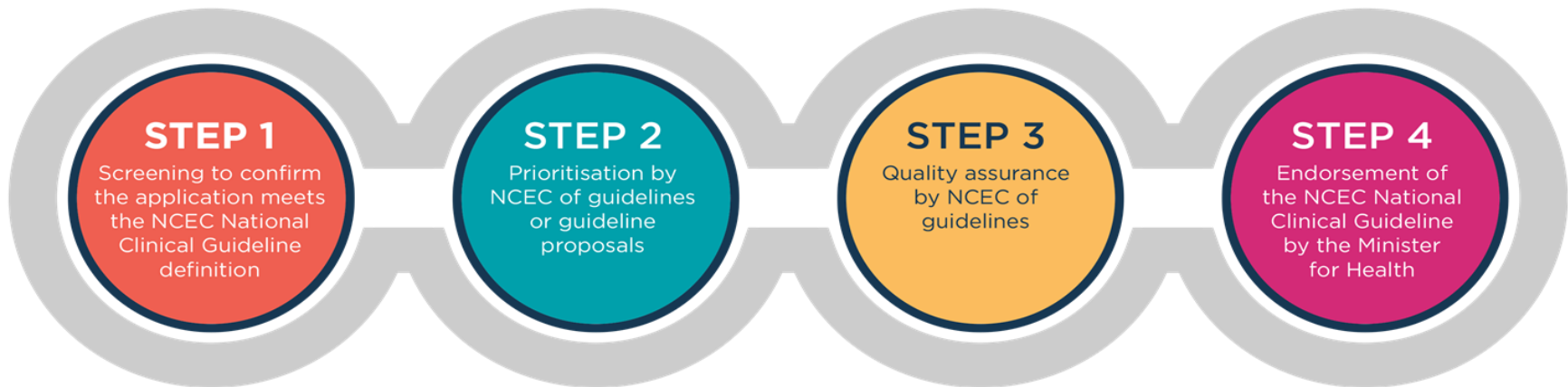


“Systematically developed statements, based on a thorough evaluation of the evidence, to assist practitioner and patient decisions about appropriate health care for specific clinical circumstances, across the entire clinical spectrum”

- Provide guidance and standards for improving the safety, quality and cost effectiveness of care across healthcare services in Ireland
- Implementation provides for a model of care that can reduce variability and improve quality of patient decisions
- Implementation supports services in providing consistent evidence-based healthcare



Framework for Endorsement of NCGs

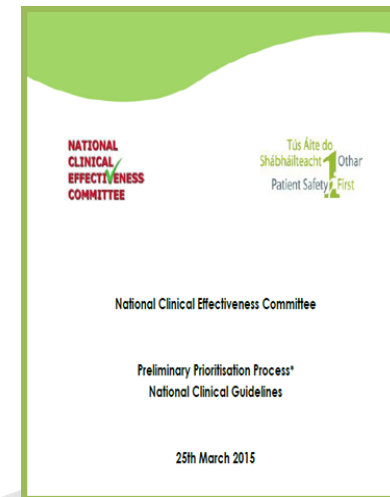




NCEC Prioritisation

Seven criteria and questions to guide development of the guideline proposal

1	Patient safety issue
2	Burden of clinical topic
3	Evidence analysis
4	Economic impact
5	Variability in practice
6	Potential for addressing health issues
7	Clinical guideline implementation

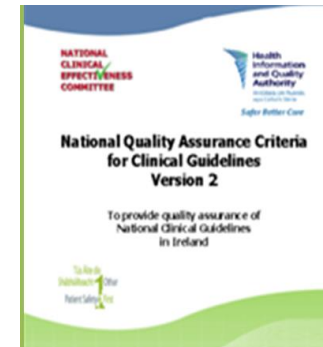


NCEC Quality assurance



Part A: Pre-requisite assurance criteria for the Irish context

Part B: QA using AGREE II, International tool to assess the quality and reporting of guidelines



<http://www.agreetrust.org/>

Guideline Development Group (GDG)



Stakeholder analysis ...

- The Chair
- Clinical expert representatives
- Methodology expertise
- Senior management
- Research, information and economic expertise
- Project management and administrative support
- Implementation lead
- Representatives of the people affected by the recommendations



National Clinical Guideline Topic		Area
Clinical Deterioration		
No. 1 National Early Warning Score (NEWS) (Feb 2013) UPDATE		2
No. 4 Irish Maternity Early Warning System Version 2 (IMEWS V2) (Feb 2019)		2
No. 6 Sepsis Management (Nov 2014)		2
No. 12 Paediatric Early Warning System (PEWS) (Nov 2015)		2
No. 18 Emergency Medicine Early Warning System (EMEWS) (Oct 2018)		2
Clinical concussion guideline		3
Clinical Handover		
No. 5 Clinical Handover in Maternity Services (Nov 2014)*		2
No. 11 Clinical Handover in Acute and Children's Hospital Services (Nov 2015)		2
Healthcare Associated Infection		
Healthcare Associated Infections (HCAI) to include:		3
<ul style="list-style-type: none"> No. 2 Prevention and Control of MRSA (Dec 2013) UPDATE No. 3 Surveillance, Diagnosis & Management of <i>Clostridium difficile</i> Infection (June 2014) UPDATE Other topics to be decided 		
Cancer and Palliative Care		
No. 7 Diagnosis, Staging and Treatment of Patients with Breast Cancer (June 2015)		2
No. 8 Diagnosis, Staging and Treatment of Patients with Prostate Cancer (June 2015)		2
No. 9 Pharmacological Management of Cancer Pain in Adults (Nov 2015)		3
No. 10 Management of Constipation in Adult Palliative Care Patients (Nov 2015)		3
No. 13 Diagnosis, Staging and Treatment of Gestational Trophoblastic Disease (Nov 2015)		2
No. 16 Diagnosis, Staging and Treatment of Patients with Lung Cancer		2
Diagnosis, Staging, and Treatment of Patients with Colon Cancer		2
Diagnosis, Staging, and Treatment of Patients with Rectal Cancer		2
Care of dying adults in the last days of life		3
Diagnosis, Staging and Treatment of Patients with Pancreatic Cancer		2
No 19 Diagnosis, Staging and Treatment of Patients with Oesophageal or Oesophagogastric Junction Cancer		2
No. 20 Diagnosis and Staging of Patients with Ovarian Cancer		2
Chronic Disease		
No. 14 Management Acute Adult Asthma Attack (Nov 2015)		3
Chronic Obstructive Airways Disease (COPD)		3
No. 17 Adult Type 1 Diabetes Guidelines (June 18)		3
Maternity Care		
Intrapartum Care Maternity Guidelines as outlined in the National Maternity Strategy, to include: stratification of intrapartum risk, induction of labour, other topics, including updates of NCG Nos 4 and 5 above*		2
Prevention		
Undernutrition in Acute Hospitals		2
No. 15 Hepatitis C Screening		1
Diagnosis and treatment of nicotine addiction		3

NCEC National Clinical Guidelines

20 published to date



NATIONAL
CLINICAL
EFFECTIVENESS
COMMITTEE



Tús Áite do
Shúbháilteacht 1st Other
Patient Safety 1st

Sepsis Management

National Clinical Guideline No. 6



An Roinn Sláinte
Department of Health

Adult type 1 diabetes mellitus

National Clinical Guideline No. 17

June 2018



An Roinn Sláinte
Department of Health

Irish Maternity Early Warning System (IMEWS) V2

National Clinical Guideline No. 4

February 2019

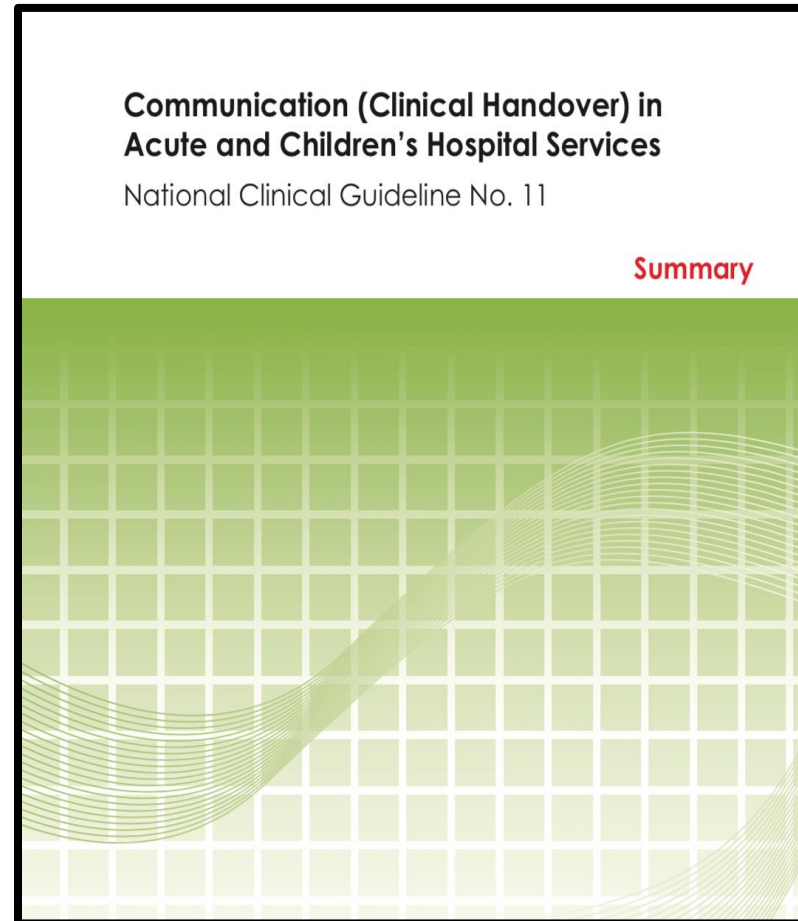
Service area:

- 1 – primary care / out of hospital services
- 2 – secondary care / in hospital care
- 3 – across primary and secondary care

Clinical Handover in Acute & Children's Hospital Services (No. 11)



- Clinical handover refers to the transfer of professional responsibility and accountability for some or all aspects of care for a patient, or group of patients, to another person or professional group on a temporary or permanent basis.
- It involves communicating patient information in a structured way.
- This helps prevent errors in communication and increase patient safety.



Support during guideline development



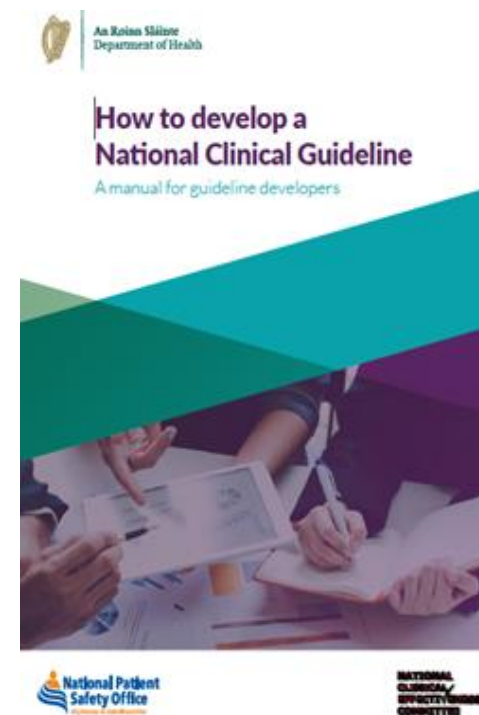
- 2019 Guideline Developers manual
- HRB CICER
- Framework for public involvement in Clinical Effectiveness Processes
- Implementation Guide and Toolkit for National Clinical Guidelines
- NCEC templates
- CEU Officer as liaison
- Face to face meetings
- Training
- Reports from NCEC

Guideline developers manual



Aim to provide guidance and instruction to persons who are considering or planning to develop clinical guidelines for submission to the NCEC.

It provides a clear pathway for the development of evidence based clinical guidelines that are implementable in the Irish health services.



HRB CICER



“Collaboration in Ireland for Clinical Effectiveness Reviews”

5 Year contract:

Launched December 2016 and commenced 1st April 2017.

HIQA/RCSI – experienced HTA and Primary care guideline developers.

Systematic and economic reviews for National Clinical Guidelines and for standard setting for National Clinical Audit.

Patient and public involvement



NCEC Values for Public Involvement

1

Dignity and respect

We will treat everyone involved in national clinical effectiveness processes with dignity and respect. We will treat any shared personal experiences as confidential, unless there are clear legal and professional reasons to do otherwise such as a child protection issue.

2

Support

We will give the public involved in national clinical effectiveness processes the support and resources they need to be full partners in this work.

3

Transparency and openness

When we work with the public in national clinical effectiveness processes, we will be open and transparent. We will include the public when we make any decisions and we will clearly show their contribution.

4

Learning and responsiveness

We will encourage everyone involved in national clinical effectiveness processes to listen openly to each other and speak without using jargon. We will use continuous learning and reflection to thoroughly evaluate and improve public involvement processes.

5

Inclusivity, fairness, and diversity

In our national clinical effectiveness process, we will include members of the public with different backgrounds, culture, skills, knowledge, and experience. We will be sensitive to everyone's needs and abilities. We will value, accommodate and respect everyone taking part.

6

Sustainability

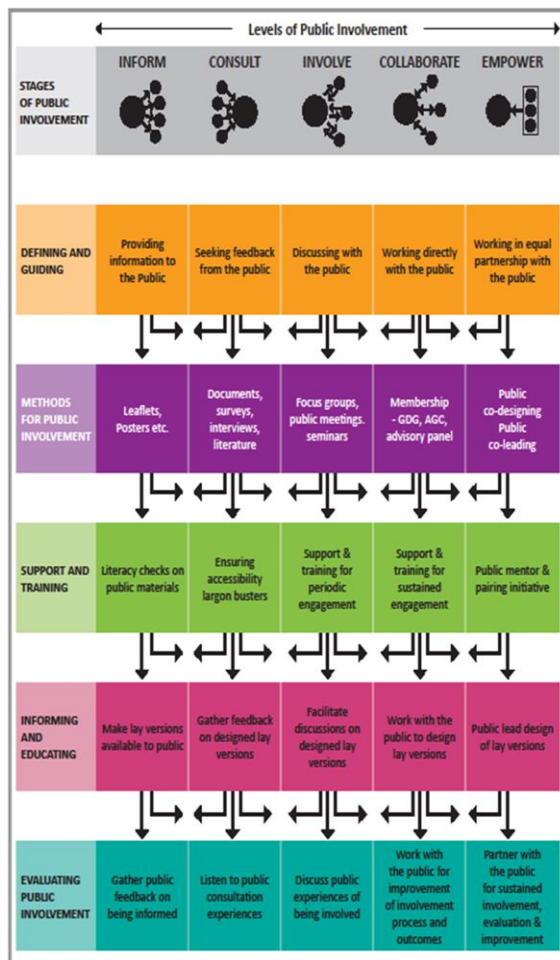
Throughout our work, we will encourage the public to take part so we can support and sustain ongoing quality public engagement.

7

Collaboration and partnership

We will base public involvement in national clinical effectiveness processes on effective collaboration and partnership. In this context, we view partnership as dialogue and agreement between at least two experts, including the patient as an expert in their own life.

Framework for Public Involvement in Clinical Effectiveness Processes



Five levels of public involvement

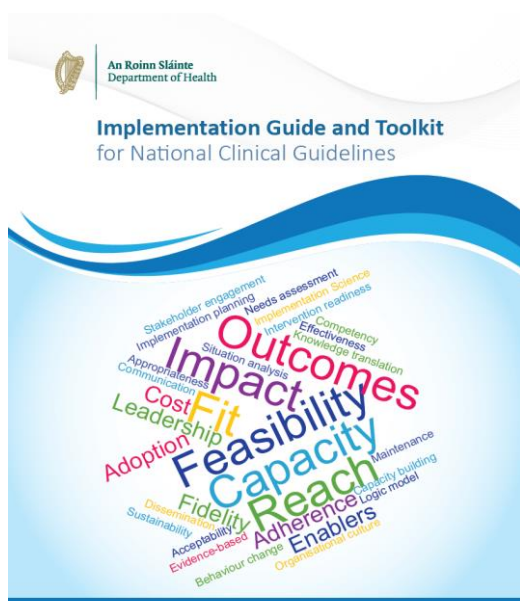
- Inform
 - Consult
 - Involve
 - Collaborate
 - Empower
- *Not presented as a progressive continuum*

Five stages for public involvement

- Defining & guiding
 - Methods
 - Support & training
 - Informing & educating
 - Evaluating
- *Involving the public should be a purpose driven activity*



Implementing National Clinical Guidelines



Stage 1: Exploring and Preparing

- ✓ Stakeholder Engagement
- ✓ Outcomes/Logic Models

Stage 2: Planning and Resourcing

- ✓ Implementation Readiness
- ✓ Implementation Planning

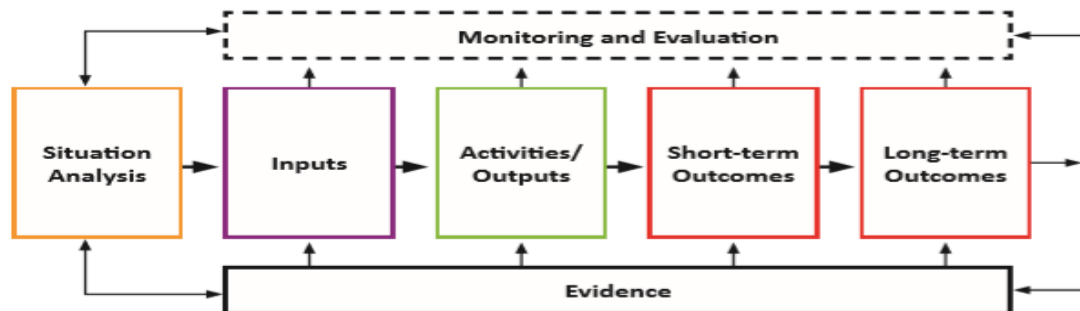
Stage 3: Implementing and Operationalising

- ✓ Professional development supports
- ✓ Monitoring

Stage 4: Full Implementation

- ✓ Continuous improvement cycles

Tool 2 – Logic Model



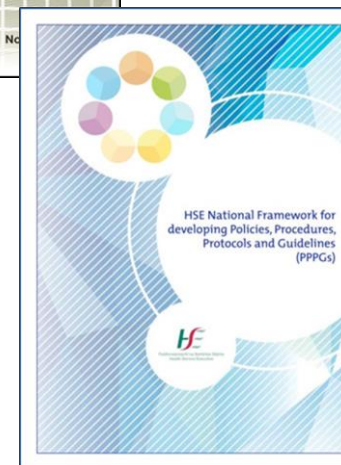
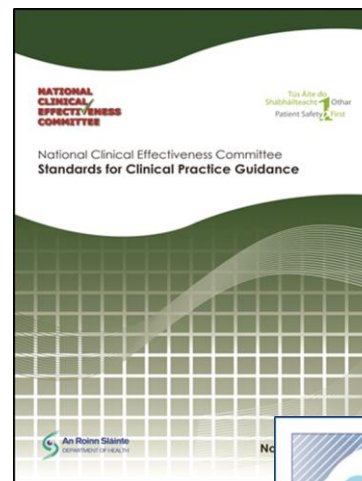
The basic outline of a logic model is shown above and a blank, editable version is provided on the following page. It should be completed by Guideline Groups in the following sequence of steps:

1. Situation Analysis
2. Short-Term and Long-Term Outcomes
3. Activities/Outputs
4. Inputs
5. Monitoring and Evaluation
6. Evidence underpinning all aspects of the Logic Model

Other Clinical Guidance



CHECKLIST
GUIDELINES
CARE **MODEL OF CARE**
BUNDLE **PATHWAY**
POLICY **ALGORITHM**
PROTOCOL **FLOWCHART**
GUIDANCE
PROCEDURE



Clinical Practice Guidance



Clinical practice guidance is defined as systematically developed statements or processes to assist clinician and patient decisions about appropriate health care for specific clinical circumstances.

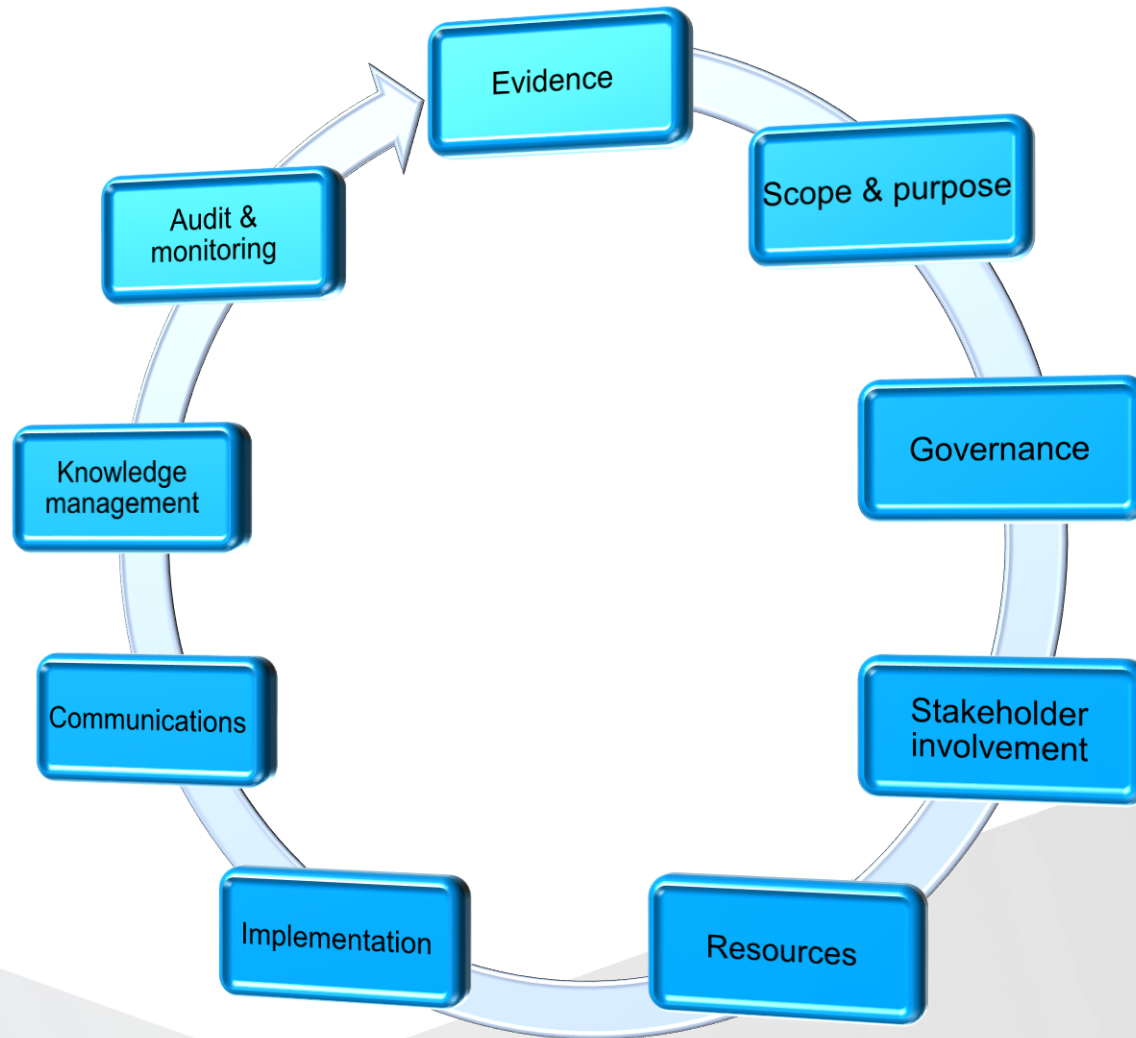
Includes: policies, procedures, protocols and guidelines

Excludes: operational, non-clinical processes e.g. HR policies

Objectives

- Standardised methodology for clinical practice guidance
- Minimise duplication in the health system
- Improve the development of evidence based clinical policy
- Translate evidence into policy & practice

Core components: Standards for Clinical Practice Guidance



NCEC National Clinical Audit



National Clinical Audit is a cyclical process that aims to improve patient care and outcomes by systematic, structured review and evaluation of clinical care against explicit clinical standards conducted on a national basis.

Clinical audit endorsed by the Minister will be titled 'NCEC National Clinical Audit'. Endorsement will mandate that the appropriate services engage with the NCEC National Clinical Audit, thereby superseding all other national clinical audits on the topic.

Framework for Endorsement of National Clinical Audit (2015)

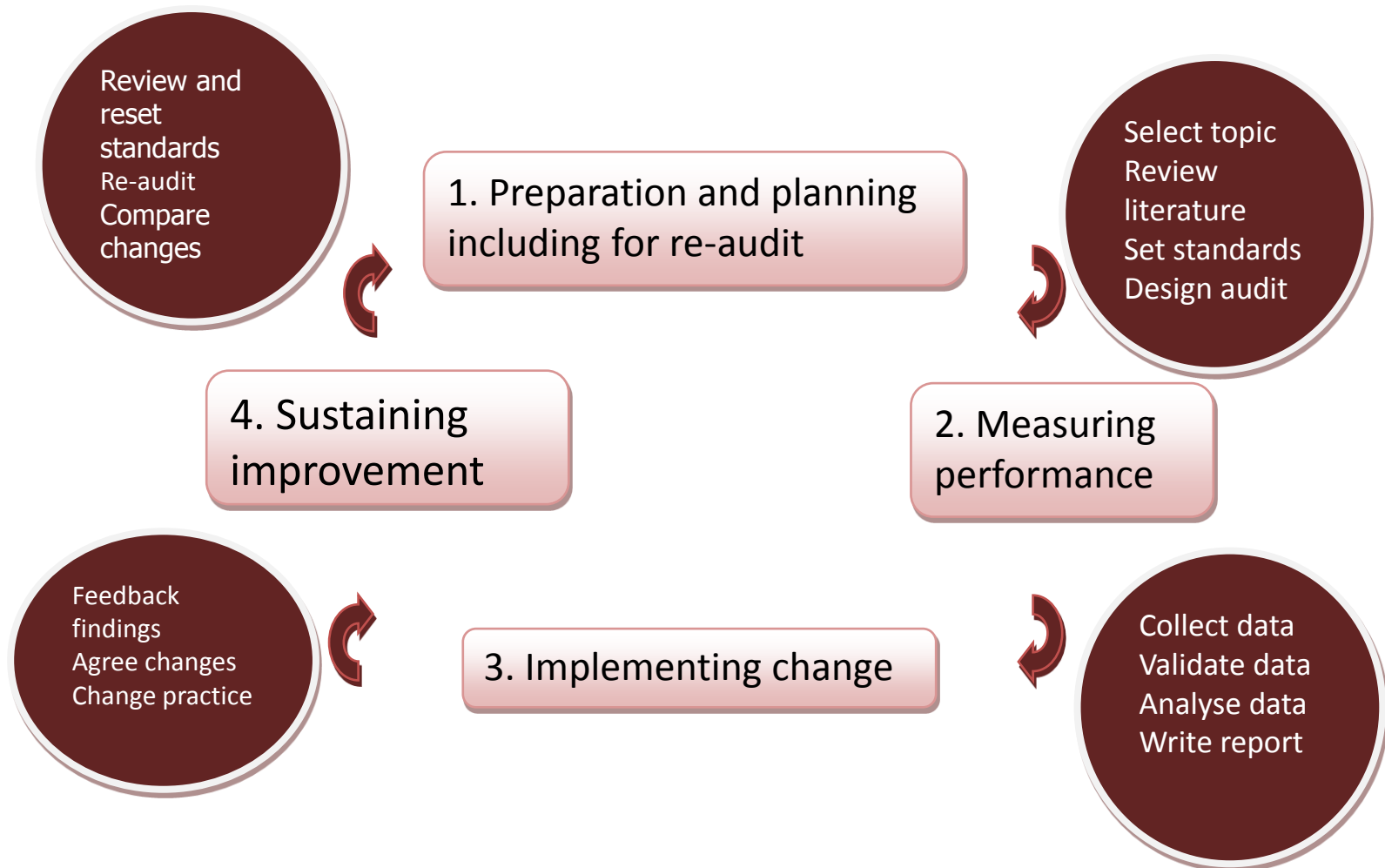
NCCA National Office of
Clinical Audit

MTA Major Trauma
Audit

MAJOR TRAUMA AUDIT
NATIONAL REPORT 2017



The audit cycle (HRB, 2013)



Framework for Endorsement of National Clinical Audit

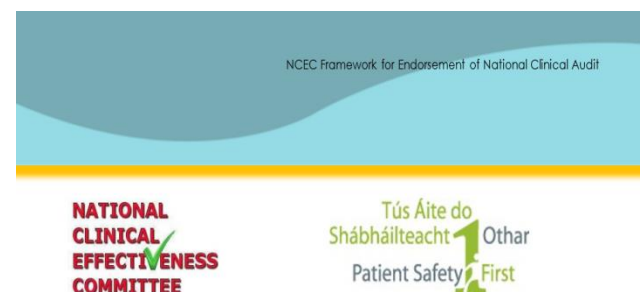


1. Screening by DoH Clinical Effectiveness Unit to confirm application meets National Clinical Audit definition
2. Prioritisation by NCEC of Clinical Audit by appraisal sub group
3. Quality assurance by NCEC of Clinical Audit as per NCEC guidance by appraisal sub group
4. Endorsement of NCEC National Clinical Audit by Minister for Health



Prioritisation and Quality Assurance for National Clinical Audit

September 2015



Framework for Endorsement of National Clinical Audit

Welcome to the NPSO Learning Zone



**NATIONAL
CLINICAL
EFFECTIVENESS
COMMITTEE**



An Roinn Sláinte
Department of Health

Training

Self-register on the **NPSO Learning Zone**

<http://health.gov.ie/national-patient-safety-office/ncec/resources-and-learning/>

**NATIONAL
CLINICAL
EFFECTIVENESS
COMMITTEE**



National Clinical
Guidelines



Patients &
Public



National Clinical
Audit



Resources &
Learning



Clinical Practice
Guidance

Introduction

Learning outcomes

By the end of the module you will be able to:

- Follow the steps involved in developing a BIA.
- Identify and select appropriate sources of information and the available tools.
- Prepare the BIA for inclusion in the submission to the NCEC.



This module should take you approximately
60 minutes to complete.



Budget impact analysis for guidelines and audit
Passed - Score 0% - Completed on 15 Dec 2017



3. National Standards for Clinical Practice Guidance (PPPGs)
Passed - Score 0% - Completed on 13 Dec 2017



The NCEC eLearning platform and the NPSO learning zone.
Completed - Completed on 13 Dec 2017

http://npsolearning.health.gov.ie/users/sign_in?next=%2Fdashboard



An Roinn Sláinte
Department of Health

Thank You